

PRODIGY[™]
ELITE

MC0530 - 500lb Cube Ice Machine

Prodigy ELITE[®] Modular Cube Ice Machine

ENHANCED RELIABILITY

Integrated ICELINQ[®] App

Provides real-time diagnostics, access to settings and guided cleanings. The app also contains specific information for convenient maintenance.

Upgraded Sensors

Ice thickness and water sensor design enhances cleanability and amplifies durability.

Preservation Mode

Maximizes uptime and notifies users of potential issues.

EASE OF USE

AutoAlert[™] Panel

The AutoAlert[™] panel displays relevant machine status that is visible across the room. Now featuring an external bin full indicator light and easier to read 16-segment display.

SANITARY DESIGN

Removable, External Air Filters

Speeds up cleaning process and reduces unit footprint.

WaterSense Adaptive Purge

Optimizes water consumption, keeping the machine cleaner and operating more efficiently.



Compatible
with ICELINQ[®]



The ICELINQ[®] app simplifies
interaction with machine via
Bluetooth[®] connection



Intelligent sensor technology
maximizes efficiency and
lowers operating costs



24 Hour Volume Production

| Air Cooled | | Remote | | Water Cooled | |
|------------------------|--------------|------------------------|------------------------|------------------------|------------------|
| 70°F/21°C 50°F/10°C | Air Water | 90°F/32°C 70°F/21°C | 70°F/21°C 50°F/10°C | 70°F/21°C 50°F/10°C | Air Water |
| 476/216 lb/kg | | 370/168 lb/kg | 500/227 lb/kg | 400/181 lb/kg | 507/230 lb/kg |
| | | | | | 371/168 lb/kg |



Modular Bin Options

| Model Number* | Dimensions W" x D" x H" | Bin Application Capacity lb/kg | Finish | Ship Weight lb/kg |
|------------------|----------------------------|--------------------------------------|------------------|----------------------|
| B330P | 30 x 34 x 36 | 344/156 | Poly | 130/59 |
| B530S or P | 30 x 34 x 50 | 536/244 | Metallic or Poly | 150/68 |



* Contact Scotsman for bin top requirements.



Cube Ice

Common ice form, ideal for
mixed drinks.



Small Cube
7/8" x 7/8" x 3/8"
(2.22 x 2.22 x .95 cm)



Medium Cube
7/8" x 7/8" x 7/8"
(2.22 x 2.22 x 2.22 cm)



Certification



Warranty

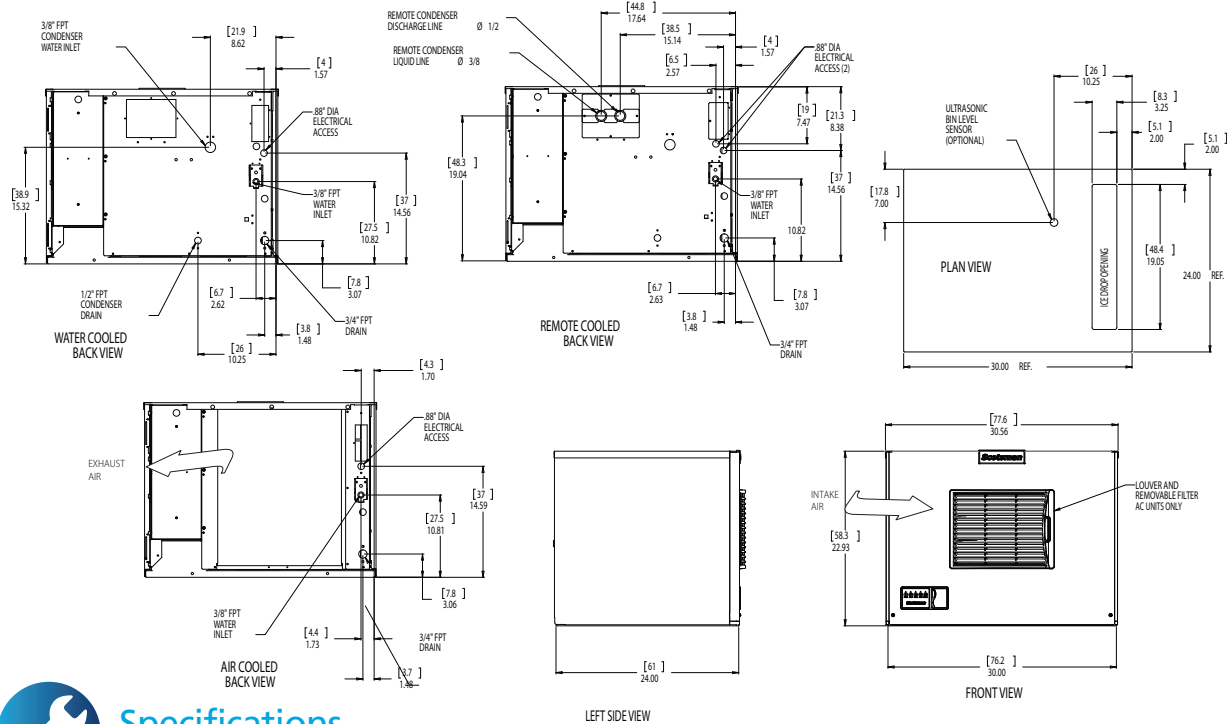
- 3 Years parts and labor on all components.
- 5 Years parts and labor on the evaporator.
- 5 Years parts on the compressor and condenser.
- Warranty valid in North, South & Central America for commercial installations.
- Contact factory for warranty in other regions.
- Residential Applications: 1 year parts and labor

Scotsman[®]

101 Corporate Woods Parkway, Vernon Hills, IL 60061

1-800-SCOTSMAN | Fax: 847-913-9844 | www.scotsman-ice.com | customer.relations@scotsman-ice.com

MC0530 - 500lb Cube Ice Machine



Specifications

| | | | | | | | Water Usage | | | |
|----------------------------|----------------|------------------|--|---------------|-----------------------|---|---|------------------------------------|-------------|---|
| Model Number | Condenser Unit | Basic Electrical | Max. Fuse Size or HACR Circuit Breaker (amps) | Circuit Wires | Min. Circuit Ampacity | Energy Consumption kWh/100 lb (45.4 kg) 90°F(32°C)/70°F(21°C) | Gallons/100 lb (liters/45.4 kg) Potable 90°F(32°C)/70°F(21°C) | Condenser 90°F(32°C)/70°F(21°C) | Energy Star | |
| Cube Size: medium or small | | | | | | | | | | |
| med. | MC0530MAX-1 | Air | 115/60/1 | 15 | 2 | 11.1 | 4.75 | 18.7/70.8 | - | ★ |
| | MC0530MR-1 | Remote | 115/60/1 | 20 | 2 | 16.2 | 6.50 | 18.0/68.1 | - | |
| | MC0530MWX-1 | Water | 115/60/1 | 15 | 2 | 9.5 | 3.86 | 16.5/62.3 | 154.0/583.7 | |
| | MC0530MAX-32 | Air | 208-230/60/1 | 15 | 2 | 5.9 | 4.75 | 18.7/70.8 | - | |
| sm. | MC0530SAX-1 | Air | 115/60/1 | 15 | 2 | 11.1 | 4.75 | 18.7/70.8 | - | ★ |
| | MC0530SR-1 | Remote | 115/60/1 | 20 | 2 | 16.2 | 6.50 | 18.0/68.1 | - | |
| | MC0530SWX-1 | Water | 115/60/1 | 15 | 2 | 9.5 | 3.86 | 16.5/62.3 | 154.0/583.7 | |
| | MC0530SAX-32 | Air | 208-230/60/1 | 15 | 2 | 5.9 | 4.75 | 18.7/70.8 | - | |

All Models

Dimensions (W x D x H):

Unit: 30" x 24" x 23"
(76.2 x 61.0 x 58.4 cm)

Shipping Carton: 33.5" x 27.5" x 28"
(85.1 x 69.9 x 71.1 cm)

| | |
|------------------|----------------|
| Shipping Weight: | BTUs per hour: |
| 175 lb / 80 kg | 7,900 |

| Model Number | Refrigerant | Refrigerant Charge (oz) |
|--------------|-------------|-------------------------|
| MC0530MAX | R290 | 6.5 |
| MC0530SAX | R290 | 6.5 |
| MC0530MWW | R290 | 5.25 |
| MC0530SWR | R290 | 5.25 |
| MC0530MR | R-404A | 160 |
| MC0530SR | R-404A | 160 |

Accessories

| Model Number | Description |
|--------------|--|
| KVS | Vari-Smart™ Ice Level Control - Precisely control ice levels using ultrasonic technology. |
| KBILC | Basic Ice Level Control - Thermistor technology, ideal for dispenser applications. |
| KSBU | Smart-Board™ Advanced Control - Use additional operational data for fast diagnosis. |
| KSBU-N | Smart-Board™ Advanced Control with Network - Network capable. |
| KPAS | Prodigy Advanced Sustainability Kit - Includes KVS and KSBU - N |
| ERC1111-1 | Remote condenser for MC0530MR-1, MC0530SR-1 - Consult remote condenser spec sheet for details. |
| BRTE10 | 10ft (3.0 m) line set, brazing required |
| BRTE25 | 25ft (7.6 m) line set, brazing required |
| BRTE40 | 40ft (12.2 m) line set, brazing required |
| BRTE75 | 75ft (22.9 m) line set, brazing required |
| XR-30 | XSafe® Sanitation System for Modular Cube - Continuous operation, field-installed. |

Scotsman recommends all ice machines have water filtration. See Scotsman water filter specification sheet for details.

Operating Requirements

| | Minimum | Maximum |
|------------------------|-------------------|---------------------|
| Air Temperatures | 50°F (10°C) | 100°F (38°C) |
| Water Temperatures | 40°F (4.4°C) | 100°F (38°C) |
| Remote Cond. Temps | -20°F (-29°C) | 120°F (49°C) |
| Potable Water Pressure | 20 PSIG (1.4 bar) | 80 PSIG (5.5 bar) |
| Cond. Water Pressure | 20 PSIG (1.4 bar) | 230 PSIG (16.1 bar) |
| Electrical Voltage | -5% | +10% |

Specifications and design are subject to change without notice.